

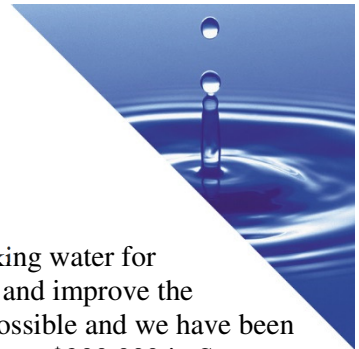
# Tariffville Water Commission

of the

## Tariffville Fire District

organized in 1939

[www.TariffvilleWater.org](http://www.TariffvilleWater.org) ~ 860.651.4227



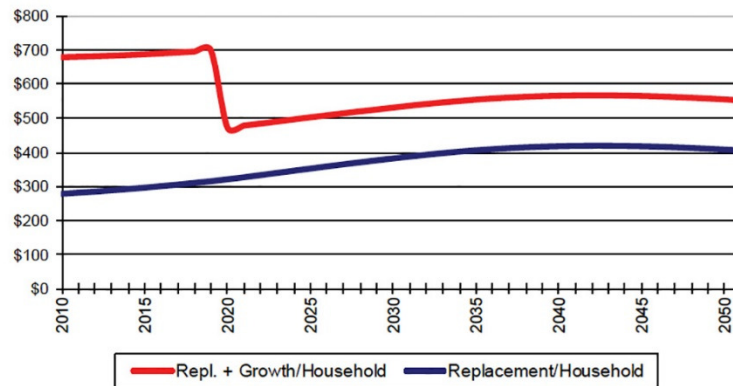
Hello:

The Tariffville Water Commission has been working since 1939 to supply delicious, safe drinking water for residents, the elementary school, churches, businesses and fire control. Our goal is to maintain and improve the infrastructure and perform State mandated projects and reports while keeping rates as low as possible and we have been successful in doing so. Since 2002 we have spent over \$584,000 in capital improvements and over \$200,000 in State mandated programs. And, our rates are still among the lowest in the State. For example, the yearly cost for a house with 1-1/2 bathrooms and 1 outdoor spigot is \$265. Overall, the average cost per house is \$290.

Our 330,000 gallon water storage tank has outlived its' useful life and needs to be replaced. The State has assistance programs for small water systems such as ours. We will be able to get a low interest loan and they will forgive 20% of the principal. The anticipated project cost is approximately \$1.6 million so the 20% is significant.

Unfortunately we still need to raise the rates to cover the cost of the tank as well as plan for future repairs and upgrades. The American Water Works Association published an article titled "Buried No Longer: Confronting America's Water Infrastructure Challenge" which explains the dilemma our country is facing with regard to our drinking water infrastructure. It's available on our website, [www.tariffvillewater.org](http://www.tariffvillewater.org). We are very fortunate. The chart below shows that over the next 20 years a household within the Northeast that is serviced by a very small (less than 3,300 people) water system should expect an additional \$400 per year to cover the cost of replacing the infrastructure. That would mean the average costs mentioned above would approach \$700. In reality, we expect the average household cost to approach \$400 within the next 3 or 4 years and remain relatively flat thereafter.

**Household Cost of Needed Investment  
for Replacement Plus Growth\*  
Northeast Very Small**



*\*This assumes costs are spread evenly across households of 2.6 persons each, based on data from the US Census.*

The charts show per household costs for replacement, and for replacement plus growth. The model assumes costs are spread evenly over households averaging 2.6 persons per household in accordance with US Census data. An artifact of the model and US Census data result in an apparent upward or downward "spike" in growth-related needs between certain decades. In reality, the apparent sudden shift in growth-related needs will be spread more evenly over the years bridging each decade to the next."

BURIED NO LONGER: CONFRONTING AMERICA'S WATER INFRASTRUCTURE CHALLENGE 31

So, we are announcing a 15% rate increase for 2016. Since we bill in arrears you will see that increase in your July bill. Please visit our website, call our answering service at 860.651.4227 or email us at [contact@tariffvillewater.org](mailto:contact@tariffvillewater.org) for more information.

Sincerely,  
The Board of Directors.

R. Scott Madigan, President; Kevin Donahue, Vice President/Collector; Priscilla Serafin, CFO; Mike Tanca, Clerk.  
Directors: Walter Banzhaf, Chris Haberbosch, Michael Jepeal, Brian O'Donnell and Jeff Scarcella.